

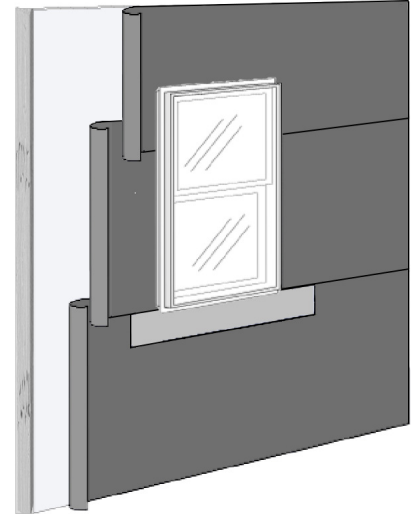
BUILDING ENVELOPE

UNWAVERING PROTECTION AGAINST MOISTURE AND VAPOR

LEAKBARRIER® BARRIERKRAFT 60 INSTALLATION GUIDELINES

Tarco provides these installation instructions as a guide for **BarrierKraft 60**, Weather Resistive Barrier (WRB). Proper installation is crucial for the WRB's effectiveness during and after construction. This guide is divided into five key parts:

- 1. Initial Setup and Installation of BarrierKraft 60:**
 - ◆ Follow steps for initial placement and handling.
- 2. Securing BarrierKraft 60:**
 - ◆ Properly fasten BarrierKraft 60 to the structure.
- 3. Aligning and Sealing Joints in BarrierKraft 60:**
 - ◆ Get guidance on overlapping seams for a watertight barrier.
- 4. Managing Openings in BarrierKraft 60:**
 - ◆ Procedures for handling penetrations to maintain barrier integrity.
- 5. Evaluating the Installation of BarrierKraft 60:**
 - ◆ Discover criteria for inspecting the installed BarrierKraft 60.



Our guide is designed to help you meet building codes, such as UBC, IRC, and IBC, ensuring BarrierKraft 60's effectiveness. These instructions apply specifically to BarrierKraft 60 configurations.

INSTALLING BARRIERKRAFT 60

- ◆ Apply **BarrierKraft 60** on open framing or code-compliant sheathing like CDX or OSB.
- ◆ Start at the lower wall end, near a corner, insuring a minimum of 6 inches of coverage around inside and outside corners.
- ◆ Roll out **BarrierKraft 60** horizontally, maintaining a smooth, even application.
- ◆ Ensure the surface is even to minimize bagging or creases.
- ◆ Continue unrolling across the entire wall, covering corners, vents, doors, and windows.
- ◆ Secure the WRB with fasteners.
- ◆ After initial placement, revisit sections to reinforce with additional fasteners for added security.

SECURING AND FASTENING BARRIERKRAFT 60

- ◆ Properly secure **BarrierKraft 60** to prevent bagging.
- ◆ The builder, architect, or designated supervisor should decide on appropriate fasteners, their quantity, and arrangement based on regional and climate types.
- ◆ Ensure compliance with current building codes and regulations.

SEAMS AND OVERLAP WITH BARRIERKRAFT 60

- ◆ For vertical seams (e.g., at roll ends), overlap previous and new pieces by a minimum of 6 inches.
- ◆ Firmly attach **BarrierKraft 60** in corner areas.
- ◆ Each subsequent layer should overlap the one beneath in a shingle fashion by at least 2 inches, although larger overlaps are permissible.

HANDLING ROUGH OPENINGS AND PENETRATIONS: BARRIERKRAFT 60

- ◆ Integrate **BarrierKraft 60** correctly when it intersects with windows, doors, vents, or any interruptions.
- ◆ Neatly fit **BarrierKraft 60** around objects and apply flashing to both the WRB and the interrupting element.

INSPECTION: BARRIERKRAFT 60

- ◆ Weather barriers should be covered promptly after installation.
- ◆ Ideally, cover **BarrierKraft 60** within four weeks of installation, though longer exposure may be possible in some situations.
- ◆ If exposed for more than four weeks, a thorough inspection is essential.
- ◆ The builder, architect, or designated authority should assess integrity.
- ◆ Only conceal the WRB when it can fulfill its intended role.
- ◆ Conduct a comprehensive final check to ensure **BarrierKraft 60** is free from damage like rips, tears, or openings.
- ◆ Repair any flaws using materials compatible with asphalt-saturated building paper if needed.

Tarco

One Information Way, Suite 225 ◆ Little Rock, AR 72202

Voice: 501-945-4506 ◆ 800-365-4506

Fax: 501-945-7718 ◆ www.tarcoroofing.com

Rev 12/2023

LeakBARRIER

© 2023 Tarco All Rights Reserved. Printed in U.S.A.